

Important User Information

Observe all necessary safety precautions when controlling the soft starter remotely. Alert personnel that machinery may start without warning.

It is the installer's responsibility to follow all instructions in this manual and to follow correct electrical practice.

The information contained in this manual is subject to change at any time and without prior notice. In no event will responsibility or liability be accepted for direct, indirect or consequential damages resulting from the use or application of this equipment.

Introduction

The USB Module can be used in conjunction with AuroraMaster to manage CMG soft starters.

These instructions detail the installation, set-up and configuration of the USB Module. For details on using AuroraMaster, refer to the AuroraMaster help file.

Installation

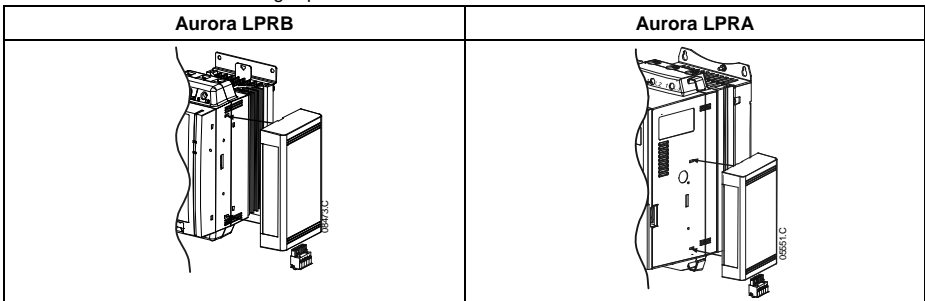


CAUTION

Remove mains and control voltage from the soft starter before attaching or removing accessories. Failure to do so may damage the equipment.

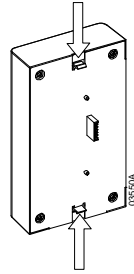
Install the USB Module using the following procedure:

1. Line up the module with the comms port slot.
2. Press the top retaining clip of the module into the soft starter chassis.
3. Press in the bottom retaining clip.



Remove the USB Module using the following procedure:

1. Remove power from the module.
2. Remove control power and mains supply from the soft starter.
3. Disconnect all field wiring from the module.
4. Push a small flat-bladed screwdriver into the slots at the top and bottom of the module and depress the retaining clips.
5. Pull the module away from the soft starter.



Connection

Aurora LPRB		Aurora LPRA	
1	Aurora LPRB	1	Aurora LPRA (Remote mode)
2	USB Module		56, 57: Stop input
3	USB port		58, 57: Reset input
		2	USB Module
		3	USB port

For the USB Module to accept serial commands, a link must be fitted across terminals A1-02 on Aurora LPRB starters.

Input links are required across terminals 56, 57 and 58, 57 if the Aurora LPRA soft starter is being operated in Remote mode. In Local mode, links are not required.



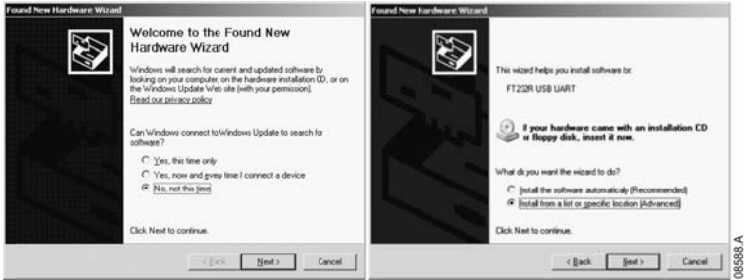
NOTE

Aurora LPRA parameter 6B selects whether the soft starter will accept Start and Stop commands from the Serial Network Master while in Remote Mode. Refer to the soft starter user manual for parameter details.

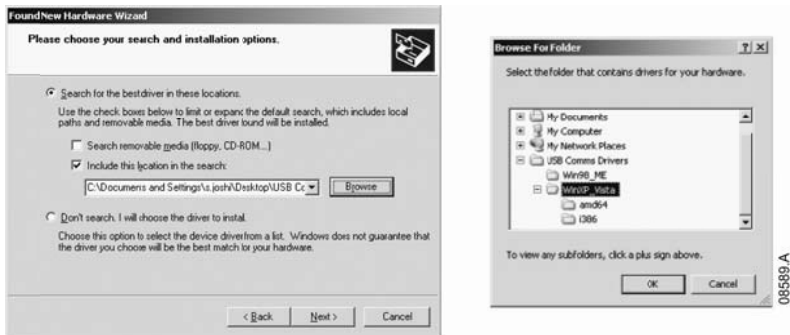
Configuration

To bring the USB Module on-line:

1. Remove control power and mains supply from the soft starter.
2. Attach the module to the soft starter as illustrated.
3. Connect the module to the PC via a USB cable. The PC should detect the module and the Hardware Update Wizard will open.
4. Install the supplied USB UART driver to operate the module as follows.

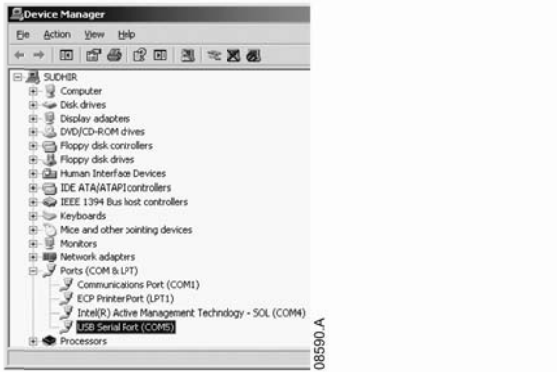


The driver can be found in the USB Comms Drivers folder on the supplied CD or can be downloaded from the website www.cmgroup.com.au/Products/Drives/LPRA and www.cmgroup.com.au/Products/Drives/LPRB. Click on the Browse button then navigate to the drivers folder and select the appropriate folder for your operating system.



Click on Ok, then Next. The software will install. If you see a prompt, click Continue Anyway. Once installation is complete, click Finish.

5. The PC will prompt you to install serial port driver software. Repeat the procedure in Step 4. You may need to restart your PC once the driver software is installed.
6. Identify the USB Serial Port assignment by checking Control panel > System > Hardware > Device Manager > Ports (COM & LPT).



NOTE

If the USB port is not shown, disconnect then reconnect the cable. If the problem persists, restart your PC.

7. Open AuroraMaster and change the settings as follows:
 Protocol: Aurora LPRB = ASCII; Aurora LPRA = Binary
 Baud rate: 9600
 Address: 20
 Port: Use the serial port number identified above
8. Apply control voltage to the soft starter and bring the Master on-line.



NOTE

The starter may trip on Starter Comms while the Master is off-line. Reset the soft starter and place the Master on-line.



NOTE

The drivers will configure the USB port that the module is connected to. You must use the same physical USB port every time you connect the module to the PC.

Specifications

Order code PIM-USB-01

Enclosure

Dimensions 35 mm (W) x 157 mm (H) x 90 mm (D)

Weight 250 g

Protection IP20

Mounting

Spring-action plastic mounting clips (x 2)

Connections

Soft starter 6-way pin assembly

Network USB-B

Maximum cable length 3 metres (not supplied)

Settings

Protocol AP Binary or AP ASCII

Address 20

Data rate (bps) 9600

www.cmgroup.com.au

Tel: +61 (0)3 9237 4000 **Fax:** +61 (0)3 9237 4010

Sales: 1300 888 853 **Support:** 1800 676 722

NEW ZEALAND

Sales: 0800 676 722

www.cmgroup.co.nz

SOUTH AFRICA

Sales: +27 (0)11 4531930

www.cmgroup.co.za

ASIA PACIFIC

Sales: +65 863 3473

www.cmgroup.com.sg

